

STANDARD TYPE DC MOTOR

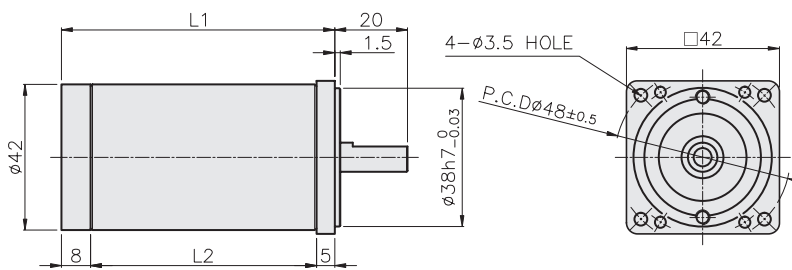
□42 10W, 15W



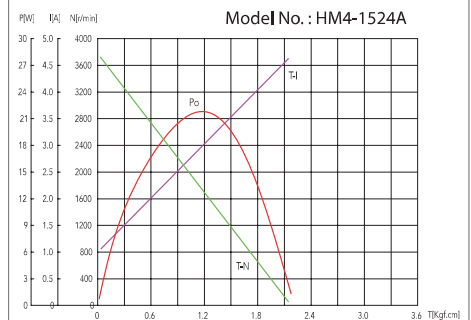
FEATURES

- Small size & Light Weight
- A wide range of application

DIMENSIONS



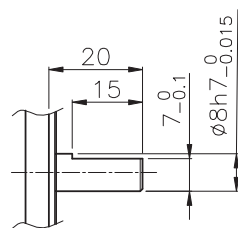
CHARACTERISTIC CURVE



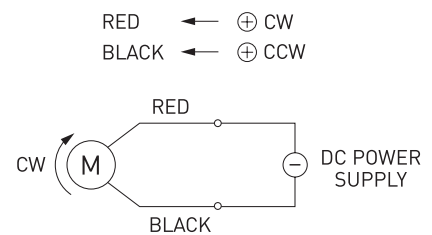
MOTOR OUTPUT SHAFT

D-CUT TYPE

TYPE



CIRCUIT DIAGRAM



SPECIFICATION

Model	Output (W)	Voltage (V)	No-Load		At Rated Load			Weight (kg)	Motor Length (L1/L2)
			Speed (rpm)	Current (A)	Speed (rpm)	Torque (kgf.cm)	Current (A)		
HM4-1024A	10	24	4100	0.8	3000	0.4	1.0	0.48	75/62
HM4-1524A	15	24	3800	1.0	3000	0.5	1.7	0.50	88.5/75.5