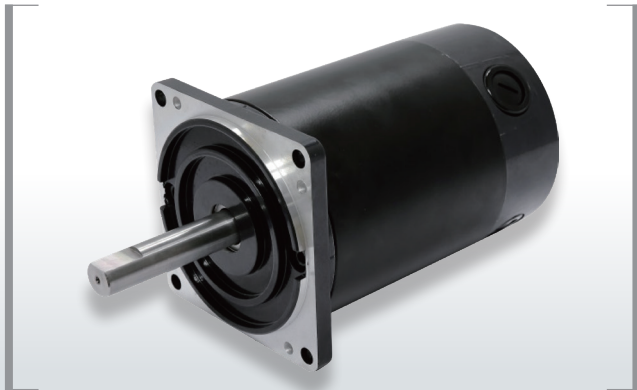


# STANDARD TYPE DC MOTOR

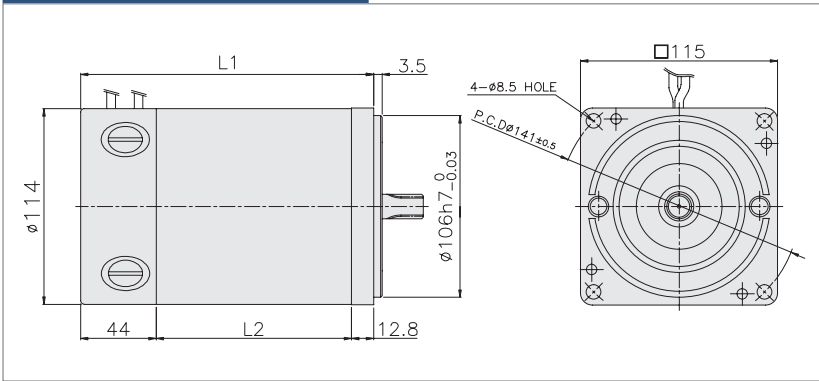
## □ 115 250W, 800W



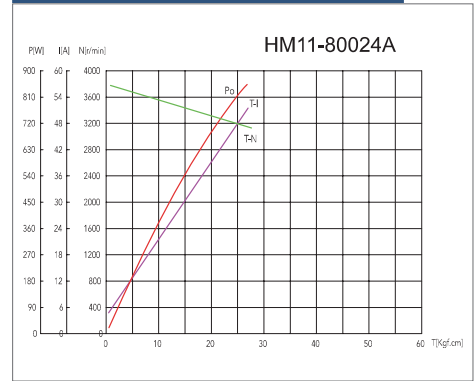
### FEATURES

- High Efficiency
- A wide range of applications
- Replaceable brushes

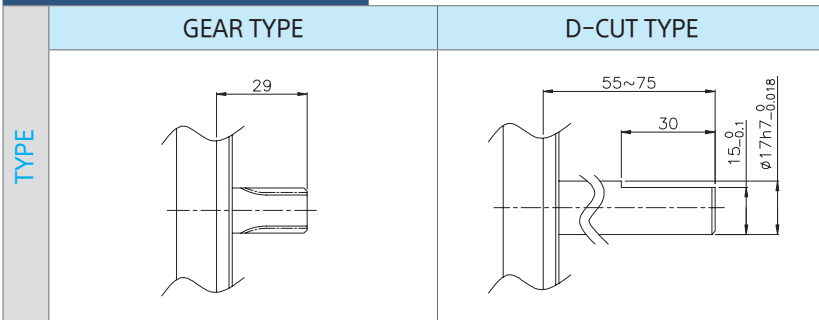
### DIMENSIONS



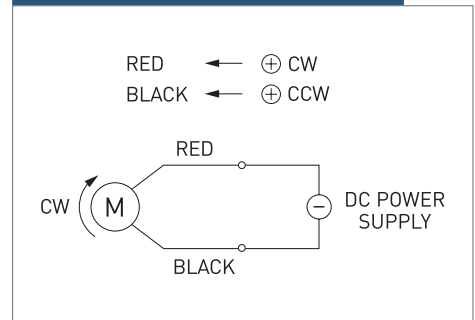
### CHARACTERISTIC CURVE



### MOTOR OUTPUT SHAFT



### CIRCUIT DIAGRAM



### SPECIFICATION

Model	Output (W)	Voltage (V)	No-Load		At Rated Load			Weight (kg)	Motor Length (L1)
			Speed (rpm)	Current (A)	Speed (rpm)	Torque (kgf.cm)	Current (A)		
HM11-25024A	250	24	3800	5.5	2930	8.3	17	4.3	131/74
HM11-80024A	800	24	3800	6.0	3200	24.4	46.7	6.3	171/114