

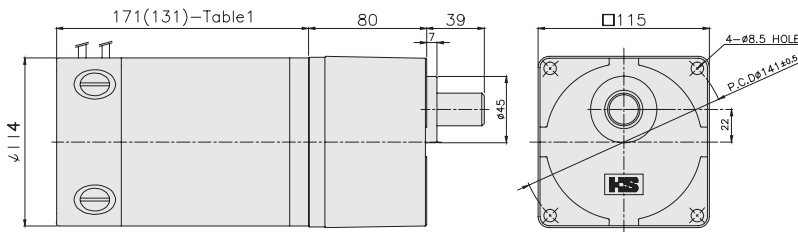
# □ 115 Gear Ratio 1/5 ~ 1/40



## FEATURES

- Gear Ratios optimized for motor
- High Efficiency
- Low Noise & Low Vibration
- Replaceable brushes

## DIMENSIONS



※ TABLE 1

MOTOR Model	SIZE
250W	131mm
800W	171mm

## GEAR HEAD OUTPUT SHAFT

※ TABLE 2

D-CUT TYPE HG11-( )K	
KET TYPE	

## Maximum permissible torque of Gear Head

Model	Gear Ratio		5	10	15	20	25	30	40
Geared Motor: HGM11-25024A Gear Head: HG11-( )	Speed (No Load)	rpm	760	380	253	190	152	127	95
	Torque	N·m	3.36	6.72	9.08	12.10	15.13	18.15	24.20
		kgf.cm	33.6	67.2	90.8	121.0	151.3	181.5	242.0
Geared Motor: HGM11-80024A Gear Head: HG11-( )	Speed (No Load)	rpm	760	380	253	190	152	127	95
	Torque	N·m	9.88	19.76	26.68	35.58	44.47	50.00	50.00
		kgf.cm	98.8	197.6	266.8	355.8	444.7	500.0	500.0

■ Green color indicates that the output shaft of the geared motor rotates in the same direction as the output shaft of the motor. Others indicate rotation in the opposite direction.